



Monthly summary report

Hospital Based Human Influenza Surveillance in Bangladesh

August 2016

Hospital based influenza surveillance
Monthly hospitalwise influenza lab results
August 2016

Hospital	District	Sample	Flu	Flu %	Flu A	Flu B	Flu A+B	Flu A/H1	Flu A/H3	Flu A/H5	Flu A/ (H1N1)pdm09	Flu B Yamagata lineage	Flu B Victoria lineage
DNMCH	Dhaka	21	0	0%	0	0	0	0	0	0	0	0	0
CBMCH	Mymensingh	19	1	5%	0	1	0	0	0	0	0	1	0
JIMCH	Kishoregonj	63	6	10%	3	3	0	0	3	0	0	1	2
RMCH	Rajshahi	32	7	22%	0	7	0	0	0	0	0	2	5
SZRMCH	Bogra	42	7	17%	1	6	0	0	1	0	0	3	3
CoMCH	Comilla	37	2	5%	0	2	0	0	0	0	0	1	1
KMCH	Khulna	19	0	0%	0	0	0	0	0	0	0	0	0
JGH	Jessore	36	6	17%	0	6	0	0	0	0	0	2	4
JRRMCH	Sylhet	30	1	3%	0	1	0	0	0	0	0	0	1
SBMCH	Barisal	68	0	0%	0	0	0	0	0	0	0	0	0
CMCH	Chittagong	31	0	0%	0	0	0	0	0	0	0	0	0
DjMCH	Dinajpur	23	7	30%	0	7	0	0	0	0	0	4	3
		421	37	9%	4	33	0	0	4	0	0	14	19

Hospital based influenza surveillance
Monthly enrollment by different surveillance groups
August 2016

Hospital	District	SARI (aged ≥ 5 years) [‡]			ILI [‡]			SARI (aged < 5 years) [‡]		
		Sample	Flu	Flu %	Sample	Flu	Flu %	Sample	Flu	Flu %
DNMCH	Dhaka	16	0	0%	-	-	-	5	0	0%
CBMCH	Mymensingh	14	1	7%	-	-	-	5	0	0%
JIMCH	Kishoregonj	34	1	3%	23	4	17%	6	1	17%
RMCH	Rajshahi	27	7	26%	-	-	-	5	0	0%
SZRMCH	Bogra	14	3	21%	20	4	20%	8	0	0%
CoMCH	Comilla	13	0	0%	19	2	11%	5	0	0%
KMCH	Khulna	14	0	0%	-	-	-	5	0	0%
JGH	Jessore	16	4	25%	15	2	13%	5	0	0%
JRRMCH	Sylhet	8	0	0%	17	1	6%	5	0	0%
SBMCH	Barisal	25	0	0%	28	0	0%	15	0	0%
CMCH	Chittagong	26	0	0%	-	-	-	5	0	0%
DjMCH	Dinajpur	18	6	33%	-	-	-	5	1	20%
		225	22	10%	122	13	11%	74	2	3%

[‡]All SARI samples (aged ≥ 5 years) collected throughout the month from medicine and pediatrics inpatients.

[‡] All ILI samples (all age groups) collected during 4 days in each month from both medicine and pediatrics OPD of selected six hospitals.

[‡] First five SARI (aged <5 years) collected from pediatrics inpatients. More than five SARI (aged <5 years) cases belong to the cluster.

Hospital based influenza surveillance
Influenza results by different age groups
August 2016

Age groups	August 2016									Initiation - August 2016								
	SARI (aged ≥ 5 years) [‡]			ILI [‡]			SARI (aged < 5 years) [‡]			SARI (aged ≥ 5 years) [‡]			ILI [‡]			SARI (aged < 5 years) [‡]		
	Sample	Flu	Flu %	Sample	Flu	Flu %	Sample	Flu	Flu %	Sample	Flu	Flu %	Sample	Flu	Flu %	Sample	Flu	Flu %
<1 Year	-	-	-	42	1	2%	53	2	4%	-	-	-	2476	171	7%	4489	188	4%
1-4 Years	-	-	-	30	3	10%	21	0	0%	-	-	-	3857	545	14%	1330	127	10%
5-14 Years	61	9	15%	11	2	18%	-	-	-	1865	380	20%	2111	497	24%	-	-	-
15-24 Years	49	4	8%	13	2	15%	-	-	-	2274	509	22%	2022	385	19%	-	-	-
25-39 Years	49	8	16%	16	2	13%	-	-	-	2301	471	20%	1782	283	16%	-	-	-
40-59 Years	39	0	0%	8	2	25%	-	-	-	2583	482	19%	1135	182	16%	-	-	-
≥ 60 Years	27	1	4%	2	1	50%	-	-	-	2723	503	18%	367	41	11%	-	-	-
	225	22	10%	122	13	11%	74	2	3%	11,746	2,345	20%	13,750	2,104	15%	5,819	315	5%

[‡]All SARI samples (aged ≥ 5 years) collected throughout the month from medicine and pediatrics inpatients.

[‡] All ILI samples (all age groups) collected during 4 days in each month from both medicine and pediatrics OPD of selected six hospitals.

[‡] First five SARI (aged <5 years) collected from pediatrics inpatients. More than five SARI (aged <5 years) cases belong to the cluster.

Hospital based influenza surveillance
Hospitalwise influenza lab results
Surveillance initiation - August 2016

Hospital	District	Initiation	Sample [‡]	Flu	Flu %	Flu A ^ψ	Flu B ^λ	Flu A+B	Flu A/H1	Flu A/H3	Flu A/H5	Flu A/ (H1N1)pdm09	Flu B Yamagata lineage	Flu B Victoria lineage
DNMCH	Dhaka	Jun 2007	1778	268	15%	167	101	0	15	72	0	80	8	2
CBMCH	Mymensingh	Oct 2007	1786	266	15%	182	84	0	7	95	1	79	11	3
JIMCH	Kishoregonj	Sep 2007	3365	631	19%	427	204	0	9	239	0	178	20	14
RMCH	Rajshahi	May 2007	2170	237	11%	157	80	0	14	93	0	50	8	11
SZRMCH	Bogra	Sep 2007	3309	543	16%	359	183	1	12	208	0	138	21	17
LAMB [†]	Dinajpur	Oct 2007	1171	112	10%	72	40	0	7	41	0	24	1	0
BBMH [†]	Chittagong	Aug 2007	1440	157	11%	118	39	0	13	42	0	63	3	0
CoMCH	Comilla	Oct 2007	3817	503	13%	327	174	2	9	170	0	148	20	4
KMCH	Khulna	Jul 2007	1904	253	13%	178	75	0	16	101	0	61	7	7
JGH	Jessore	Sep 2007	2877	519	18%	331	187	1	10	179	0	142	11	38
JRRMCH	Sylhet	Jul 2007	2694	464	17%	283	180	1	16	130	0	137	12	25
SBMCH	Barisal	Aug 2007	3823	548	14%	350	195	3	9	178	0	165	19	27
CMCH	Chittagong	Apr 2014	647	136	21%	83	52	1	0	50	0	33	18	14
DJMCH	Dinajpur	Apr 2014	534	127	24%	79	48	0	0	56	0	21	19	8
			31,315	4,764	15%	3,113	1,642	9	137	1,654	1	1,319	178	170

^λInfluenza B typing initiated in January 2016.

[‡]Analysis excluded two samples of July 2016, which will undergo repeat rRT-PCR.

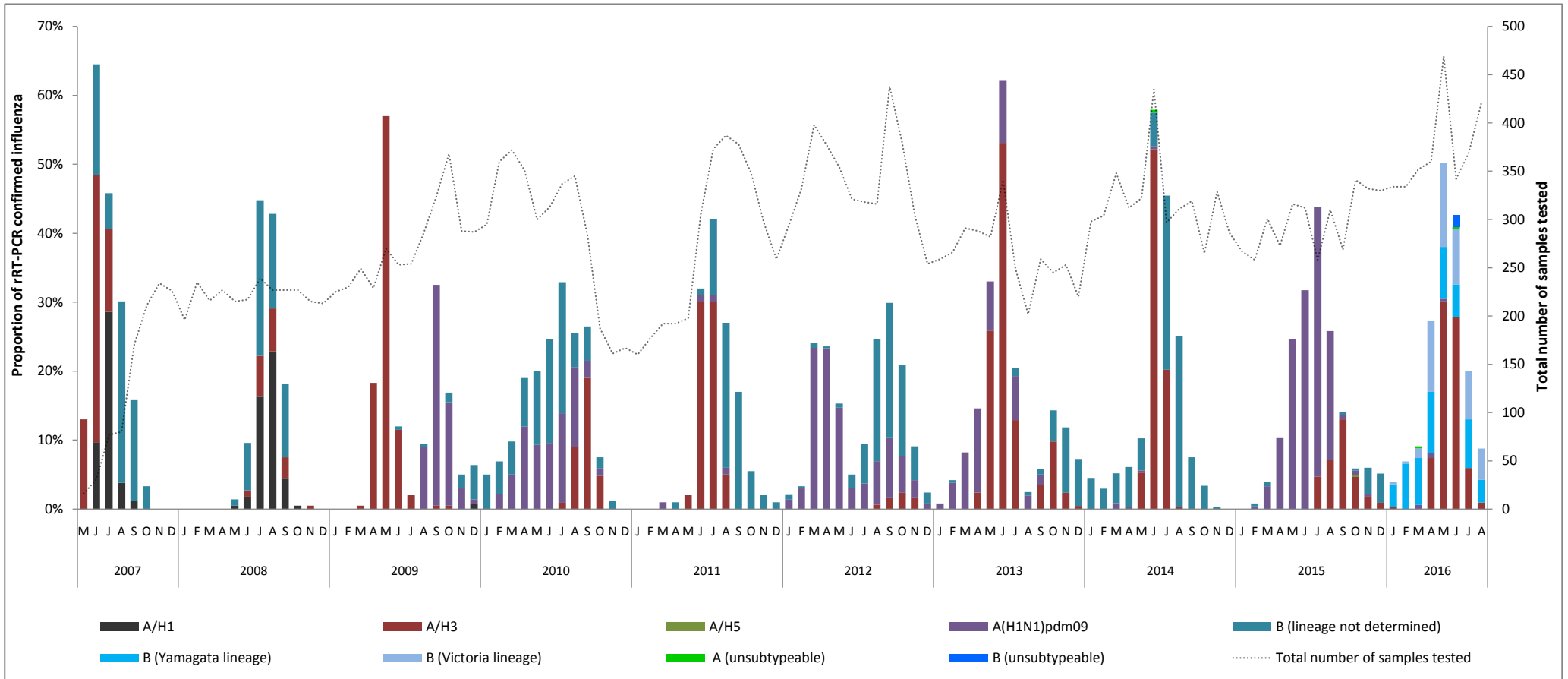
^ψrRT-PCR result of four samples were equivocal positive for Influenza A.

^ψOne sample collected in June 2013 was co-infected with both A(H3) and A(H1N1)pdm09.

^λThree samples were co-infected with both Influenza B (Yamagata lineage) and Influenza B (Victoria lineage), another six samples were unsubtypeable.

[†]Surveillance activities ended at LAMB (Dinajpur) and BBMH (Chittagong) in May 2016.

Hospital based influenza surveillance
Influenza seasonality graph
May 2007 - August 2016



Note: Influenza B typing initiated in January 2016

J 0%
 J 0%