

## Monthly summary report

# Hospital Based Human Influenza Surveillance in Bangladesh

**July 2016**

**Hospital based influenza surveillance**  
**Monthly hospitalwise influenza lab results**  
**July 2016**

Hospital	District	Sample <sup>‡</sup>	Flu	Flu %	Flu A	Flu B	Flu A+B	Flu A/H1	Flu A/H3	Flu A/H5	Flu A/ (H1N1)pdm09	Flu B Yamagata lineage	Flu B Victoria lineage
DNMCH	Dhaka	16	1	6%	0	1	0	0	0	0	0	0	1
CBMCH	Mymensingh	19	1	5%	1	0	0	0	1	0	0	0	0
JIMCH	Kishoregonj	49	8	16%	7	1	0	0	7	0	0	1	0
RMCH	Rajshahi	24	11	46%	3	8	0	0	3	0	0	6	2
SZRMCH	Bogra	42	17	40%	5	12	0	0	5	0	0	7	5
CoMCH	Comilla	36	1	3%	1	0	0	0	1	0	0	0	0
KMCH	Khulna	19	1	5%	0	1	0	0	0	0	0	0	1
JGH	Jessore	31	5	16%	0	5	0	0	0	0	0	0	5
JRRMCH	Sylhet	31	13	42%	3	10	0	0	3	0	0	2	8
SBMCH	Barisal	58	2	3%	1	1	0	0	1	0	0	0	1
CMCH	Chittagong	23	2	9%	0	2	0	0	0	0	0	1	1
DjMCH	Dinajpur	21	12	57%	1	11	0	0	1	0	0	9	2
		<b>369</b>	<b>74</b>	<b>20%</b>	<b>22</b>	<b>52</b>	<b>0</b>	<b>0</b>	<b>22</b>	<b>0</b>	<b>0</b>	<b>26</b>	<b>26</b>

<sup>‡</sup>Analysis excluded two samples which will undergo repeat rRT-PCR.

**Hospital based influenza surveillance**  
**Monthly enrollment by different surveillance groups**  
**July 2016**

Hospital	District	SARI (aged $\geq 5$ years) <sup>‡</sup>			ILI <sup>‡</sup>			SARI (aged $< 5$ years) <sup>*</sup>		
		Sample	Flu	Flu %	Sample	Flu	Flu %	Sample	Flu	Flu %
DNMCH	Dhaka	11	1	9%	-	-	-	5	0	0%
CBMCH	Mymensingh	12	1	8%	-	-	-	7	0	0%
JIMCH	Kishoregonj	23	4	17%	18	3	17%	8	1	13%
RMCH	Rajshahi	18	9	50%	-	-	-	6	2	33%
SZRMCH	Bogra	14	8	57%	20	8	40%	8	1	13%
CoMCH	Comilla	13	0	0%	18	1	6%	5	0	0%
KMCH	Khulna	14	1	7%	-	-	-	5	0	0%
JGH	Jessore	11	4	36%	15	1	7%	5	0	0%
JRRMCH	Sylhet	12	7	58%	13	4	31%	6	2	33%
SBMCH	Barisal	22	1	5%	26	1	4%	10	0	0%
CMCH	Chittagong	18	0	0%	-	-	-	5	2	40%
DjMCH	Dinajpur	16	10	63%	-	-	-	5	2	40%
		<b>184</b>	<b>46</b>	<b>25%</b>	<b>110</b>	<b>18</b>	<b>16%</b>	<b>75</b>	<b>10</b>	<b>13%</b>

<sup>‡</sup> All SARI samples (aged  $\geq 5$  years) collected throughout the month from medicine and pediatrics inpatients.

<sup>‡</sup> All ILI samples (all age groups) collected during 4 days in each month from both medicine and pediatrics OPD of selected six hospitals.

<sup>\*</sup> First five SARI (aged  $< 5$  years) collected from pediatrics inpatients. More than five SARI (aged  $< 5$  years) cases belong to the cluster.

**Hospital based influenza surveillance**  
**Influenza results by different age groups**  
**July 2016**

Age groups	July 2016									Initiation - July 2016								
	SARI (aged ≥ 5 years) <sup>‡</sup>			ILI <sup>‡</sup>			SARI (aged < 5 years) <sup>‡</sup>			SARI (aged ≥ 5 years) <sup>‡</sup>			ILI <sup>‡</sup>			SARI (aged < 5 years) <sup>‡</sup>		
	Sample	Flu	Flu %	Sample	Flu	Flu %	Sample	Flu	Flu %	Sample	Flu	Flu %	Sample	Flu	Flu %	Sample	Flu	Flu %
<1 Year	-	-	-	32	2	6%	54	7	13%	-	-	-	2434	170	7%	4436	186	4%
1-4 Years	-	-	-	39	7	18%	21	3	14%	-	-	-	3827	542	14%	1309	127	10%
5-14 Years	35	11	31%	6	3	50%	-	-	-	1804	371	21%	2100	495	24%	-	-	-
15-24 Years	44	12	27%	10	2	20%	-	-	-	2225	505	23%	2009	383	19%	-	-	-
25-39 Years	33	5	15%	13	3	23%	-	-	-	2252	463	21%	1766	281	16%	-	-	-
40-59 Years	29	7	24%	8	1	13%	-	-	-	2544	482	19%	1127	180	16%	-	-	-
≥ 60 Years	43	11	26%	2	0	0%	-	-	-	2696	502	19%	365	40	11%	-	-	-
	<b>184</b>	<b>46</b>	<b>25%</b>	<b>110</b>	<b>18</b>	<b>16%</b>	<b>75</b>	<b>10</b>	<b>13%</b>	<b>11,521</b>	<b>2,323</b>	<b>20%</b>	<b>13,628</b>	<b>2,091</b>	<b>15%</b>	<b>5,745</b>	<b>313</b>	<b>5%</b>

<sup>‡</sup> All SARI samples (aged ≥ 5 years) collected throughout the month from medicine and pediatrics inpatients.

<sup>‡</sup> All ILI samples (all age groups) collected during 4 days in each month from both medicine and pediatrics OPD of selected six hospitals.

<sup>‡</sup> First five SARI (aged <5 years) collected from pediatrics inpatients. More than five SARI (aged <5 years) cases belong to the cluster.

**Hospital based influenza surveillance**  
**Hospitalwise influenza lab results**  
**Surveillance initiation - July 2016**

Hospital	District	Initiation	Sample <sup>‡</sup>	Flu	Flu %	Flu A <sup>ψ</sup>	Flu B <sup>λ</sup>	Flu A+B	Flu A/H1	Flu A/H3	Flu A/H5	Flu A/ (H1N1)pdm09	Flu B Yamagata lineage	Flu B Victoria lineage
DNMCH	Dhaka	Jun 2007	1757	268	15%	167	101	0	15	72	0	80	8	2
CBMCH	Mymensingh	Oct 2007	1767	265	15%	182	83	0	7	95	1	79	10	3
JIMCH	Kishoregonj	Sep 2007	3302	625	19%	424	201	0	9	236	0	178	19	12
RMCH	Rajshahi	May 2007	2138	230	11%	157	73	0	14	93	0	50	6	6
SZRMCH	Bogra	Sep 2007	3267	536	16%	358	177	1	12	207	0	138	18	14
LAMB <sup>†</sup>	Dinajpur	Oct 2007	1171	112	10%	72	40	0	7	41	0	24	1	0
BBMH <sup>†</sup>	Chittagong	Aug 2007	1440	157	11%	118	39	0	13	42	0	63	3	0
CoMCH	Comilla	Oct 2007	3780	501	13%	327	172	2	9	170	0	148	19	3
KMCH	Khulna	Jul 2007	1885	253	13%	178	75	0	16	101	0	61	7	7
JGH	Jessore	Sep 2007	2841	513	18%	331	181	1	10	179	0	142	9	34
JRRMCH	Sylhet	Jul 2007	2664	463	17%	283	179	1	16	130	0	137	12	24
SBMCH	Barisal	Aug 2007	3755	548	15%	350	195	3	9	178	0	165	19	27
CMCH	Chittagong	Apr 2014	616	136	22%	83	52	1	0	50	0	33	18	14
DjMCH	Dinajpur	Apr 2014	511	120	23%	79	41	0	0	56	0	21	15	5
			<b>30,894</b>	<b>4,727</b>	<b>15%</b>	<b>3,109</b>	<b>1,609</b>	<b>9</b>	<b>137</b>	<b>1,650</b>	<b>1</b>	<b>1,319</b>	<b>164</b>	<b>151</b>

<sup>λ</sup>Influenza B typing initiated in January 2016.

<sup>‡</sup>Analysis excluded two samples of July 2016, which will undergo repeat rRT-PCR.

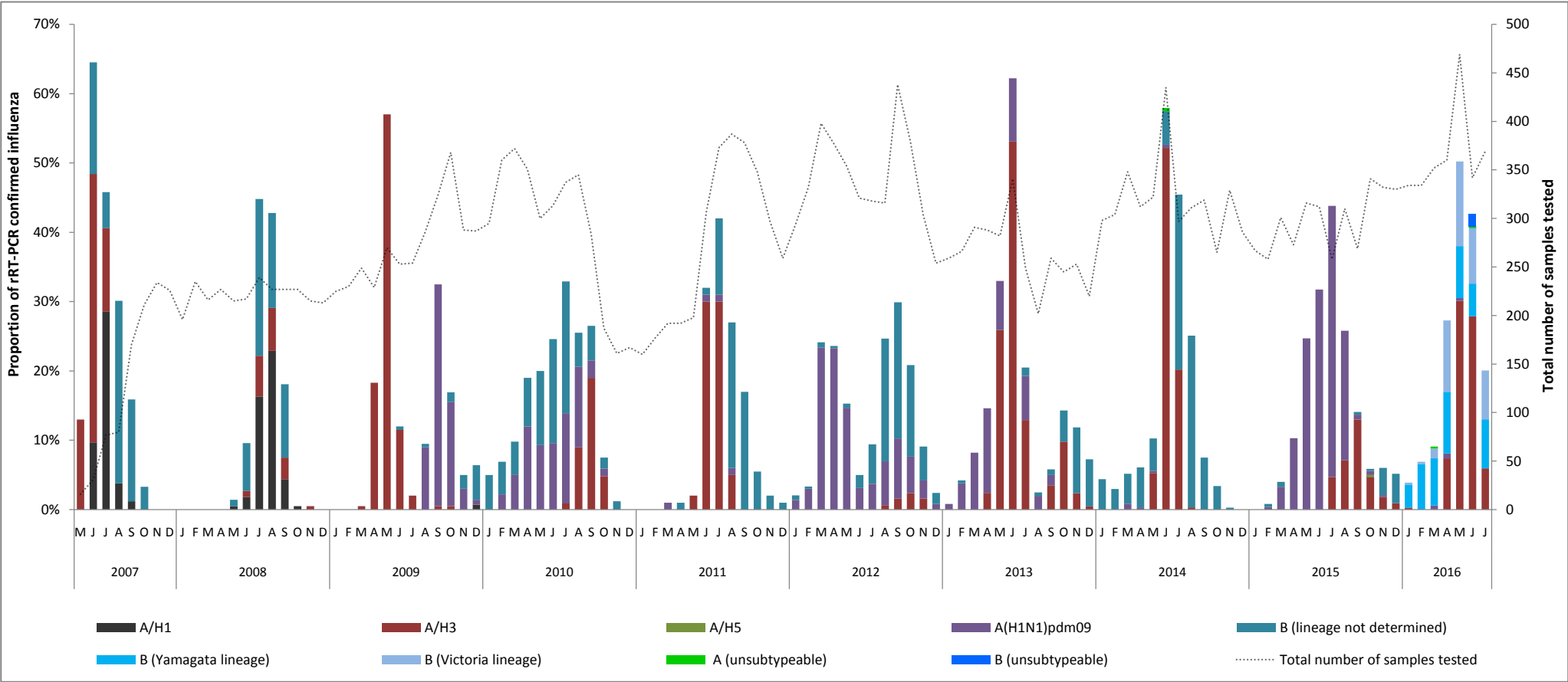
<sup>ψ</sup>rRT-PCR result of four samples were equivocal positive for Influenza A.

<sup>ψ</sup>One sample collected in June 2013 was co-infected with both A(H3) and A(H1N1)pdm09.

<sup>λ</sup>Three samples were co-infected with both Influenza B (Yamagata lineage) and Influenza B (Victoria lineage), another six samples were unsubtypeable.

<sup>†</sup>Surveillance activities ended at LAMB (Dinajpur) and BBMH (Chittagong) in May 2016.

Hospital based influenza surveillance  
Influenza seasonality graph  
May 2007 - July 2016



Note: Influenza B typing initiated in January 2016